

PTC® Windchill® Workgroup Manager™ for NX™

Delivering the power and benefits of PTC Windchill to the NX environment

Designers can perform everyday design tasks in their familiar MCAD environment while using PTC Windchill to manage NX data throughout its lifecycle.

Managing NX data within PTC Windchill allows you to capture and control all your design information within a single enterprise environment, manage the data under a single product structure, and easily leverage that information across the extended organization in a controlled manner.

Key benefits

Improve collaboration

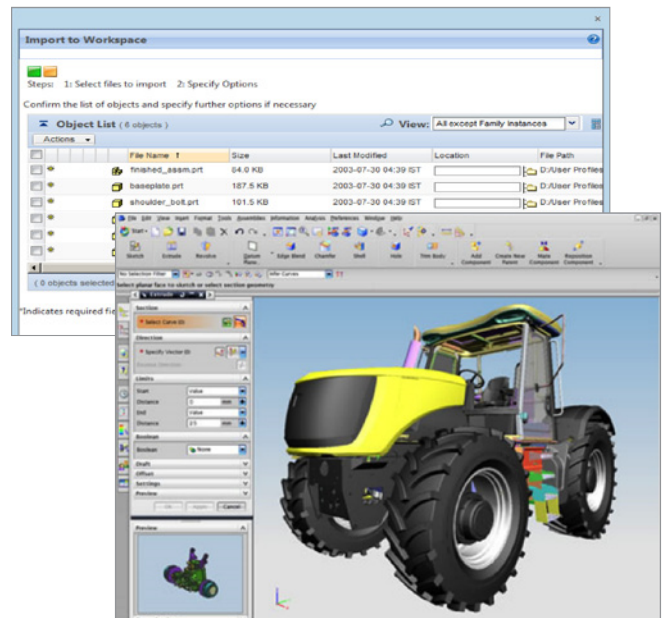
- Fully incorporate the use of NX data in product development processes which span multiple organizations
- Extend the sharing of design data beyond engineering, departmental and corporate boundaries using standard Internet technology

Improve data quality

- Eliminate mistakes associated with duplicate or incomplete information by managing data from multiple MCAD and ECAD/EDA systems in a single, controlled location under the umbrella of a single product structure
- Centralize the management of business processes, such as change control
- Provide all relevant groups with accurate, up-to-date, product content information that's held in a single location

Increase enterprise efficiency

- Reduce the number of systems required in product development by providing one system that can manage multiple sources of data (e.g., different CAD and documentation formats)
- Enforce standard design processes across multiple design projects and organizations



The PTC Windchill Workgroup Manager for NX understands NX data and file types, and the relationships that can exist between that data.

Improve engineer productivity

- Improve efficiency by reusing designs and reducing the number of design steps
- Embed PTC Windchill actions within the NX application, so designers can focus on design activities rather than data management
- Minimize engineer interruptions by utilizing background processes to upload files to PTC Windchill, thus allowing designers to continue using NX without having to wait for database actions to complete

Features

Support key NX data and features

- Store the NX file type (.prt) in PTC Windchill and recognize these files as being authored in NX
- Recognize NX Part-to-Part (WAVE and IPE) dependencies and representation of those references in the PTC Windchill environment
- Open files directly in NX when browsing or searching PTC Windchill environment
- Copy or rename NX designs in the PTC Windchill environment while still maintaining referential integrity between NX files
- Manage Family of Parts from NX in the PTC Windchill environment.
- Expose Windchill folders directly as NX Reuse Library locations to enable seamless access to Standard Parts, Reusable Components, Feature Templates and UDFs managed in PTC Windchill

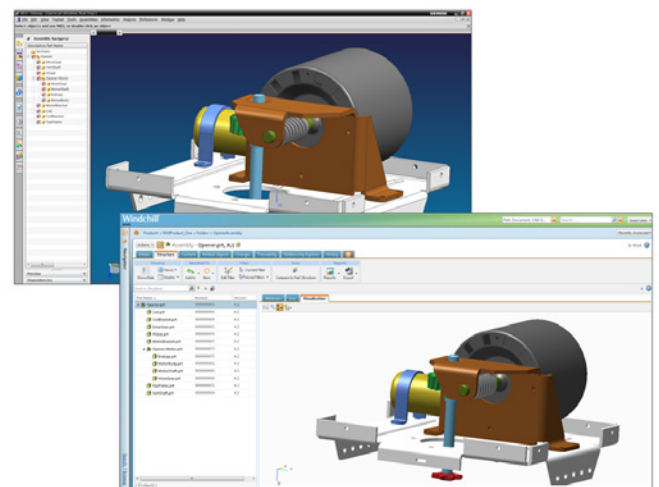
Exchange attribute/property information between NX files and the PTC Windchill environment

- Expose NX attributes to PTC Windchill for searching purposes
- Allow NX attributes to be edited in the PTC Windchill environment
- Eliminate the need to enter attributes in both the PTC Windchill and NX environments

- Reduce the amount of time designers spend entering information in NX by having certain attributes, such as information on drawing borders, automatically populated by PTC Windchill

Integrate the NX environment within PTC Windchill and its related enterprise processes

- Utilize PTC Windchill tools for managing NX data within the product structure, development process and lifecycle
- Enable Check-In and Check-Out of named design baselines, latest configurations, or criteria such as latest released configuration or effectivity date
- Manage NX data within the PTC Windchill engineering change management process
- Eliminate BOM redundancy and errors by synchronizing the enterprise BOM with the NX structure
- Allow NX data to be part of an enterprise BOM structure that can contain data from many different CAD systems
- Enable version control on NX data to record complete traceability of changes and design development
- Utilize status icons to quickly inform NX designers and other users about the condition of NX data within PTC Windchill



Assembly Navigator in NX and corresponding Model Structure with lightweight visualization based on PTC® Creo® View™ format in PTC Windchill.

Embed PTC Windchill in the NX application

- Open NX files, stored in PTC Windchill, directly from NX
- Perform key PTC Windchill actions, such as Open, Check-In and Check-Out, directly from the NX environment
- Inform NX users on any relevant PTC Windchill events via pop-up messaging system
- Upload NX files to the PTC Windchill database using background processes
- Use a comprehensive set of preferences to personalize and streamline your NX interaction with PTC Windchill

Exchange and share design data in a collaborative environment

- Provide a single source of product information and leverage design information outside the design environment
- Enable controlled sharing of NX data across the enterprise
- Utilize generic visualization collaboration tools to provide visibility of NX designs to the entire enterprise, regardless of whether users have access to or knowledge of NX
- Make NX design data available to external audiences who have proper system access

Automate illustration change management throughout the service information lifecycle

- Maintain associativity with engineering data to automate change processes when design changes occur throughout the product lifecycle
- Integrate with PTC Windchill, PTC® Creo® and PTC® Arbortext® products to enable enterprise-wide delivery of 3D service and parts information

Platform specifications

- Prerequisite: PTC® Windchill® PDMLink®, PTC® Windchill® ProjectLink™
- Operating Systems: Microsoft Windows® 7, Vista and XP
- Browser: Internet Explorer® and Mozilla Firefox®
- Languages: English, Chinese (Traditional), Chinese (Simplified), French, German, Japanese, Korean, Spanish and Italian

For the most up-to-date platform support information, visit: PTC.com/partners/hardware/current/support.htm

NOTE: The timing of any product release, including any features or functionality, is subject to change at PTC's discretion.

© 2013, PTC Inc. (PTC). All rights reserved. Information described herein is furnished for informational use only, is subject to change without notice, and should not be taken as a guarantee, commitment, condition or offer by PTC. PTC, the PTC Logo, PTC Windchill, PTC Windchill Workgroup Manager, PTC Windchill PDMLink, PTC Windchill ProjectLink, PTC Creo, PTC Arbortext and all other PTC product names and logos are trademarks or registered trademarks of PTC and/or its subsidiaries in the United States and other countries. All other product or company names are property of their respective owners. The timing of any product release, including any features or functionality, is subject to change at PTC's discretion.

J1607-PTC-Workgroup-Manager-for-NX-DS-EN-0313