

# PTC Windchill® Workgroup Manager for AutoCAD®

DELIVERING THE POWER AND BENEFITS OF PTC WINDCHILL TO THE AUTOCAD DESIGN ENVIRONMENT

Designers can now perform everyday design tasks in their familiar MCAD environment while using PTC Windchill to manage AutoCAD data throughout its lifecycle.

Managing AutoCAD-authored data within PTC Windchill allows you to capture and control all your design information within a single enterprise environment, manage the data under a single product structure, and easily leverage that information across the extended organization in a controlled manner.

## Key benefits

### Improve collaboration

- Fully incorporate the use of AutoCAD data in product development processes that span multiple organizations
- Extend the sharing of design data beyond engineering departmental and corporate boundaries using standard Internet technology

### Improve data quality

- Eliminate mistakes associated with duplicate or incomplete data by managing data from multiple CAD systems in a single, controlled location under the umbrella of a single product structure
- Centralize the management of business processes, such as change control
- Provide all relevant groups with accurate, up-to-date, relevant product content information that's held in a single location

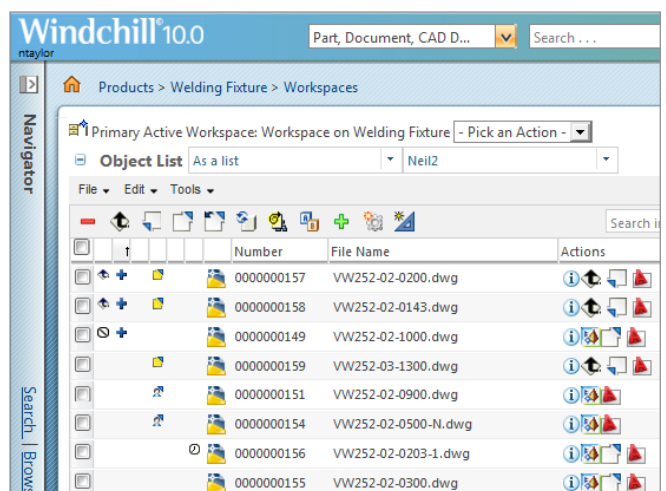
### Improve engineer productivity

- Increase operating efficiency by reusing design data and reducing the number of design steps

- Enable designers to focus on design activities rather than data management by embedding PTC Windchill actions within the AutoCAD application
- Minimize engineer interruptions by utilizing background processes to upload files to PTC Windchill, thus allowing designers to continue using AutoCAD without having to wait for database actions to complete

### Increase enterprise efficiency

- Reduce the number of systems required in product development by providing one system that can manage multiple sources of data (e.g., different CAD and documentation formats)
- Enforce standard design processes across multiple design projects and organizations

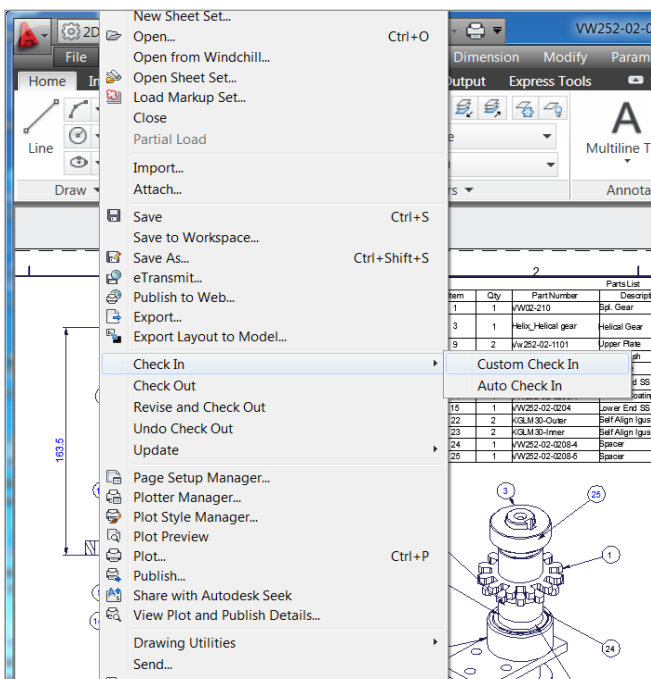


Employ native AutoCAD icons and file types, and display different status icons within PTC Windchill.

## Features

### Support key AutoCAD data and features

- Store different AutoCAD file types, such as \*.dwg, \*.dwt, \*.dws and \*.dxf in PTC Windchill, and recognize these files as being authored in AutoCAD
- Recognize External Reference (XREF) dependencies and represent those references in the PTC Windchill environment
- Automatically associate files related to the AutoCAD drawing, such as images and DXF files
- Open files directly in AutoCAD when browsing or searching PTC Windchill
- Automatically manage local working directories with the PTC Windchill Workgroup Manager
- Copy or rename data in the PTC Windchill environment while still maintaining referential integrity between AutoCAD files
- Use native AutoCAD icons to make AutoCAD data easily identifiable in PTC Windchill
- Use the Import/Export tool to transfer data sets to and from PTC Windchill



Embedded PTC Windchill menu options within the AutoCAD environment.

### Exchange attribute/property information between AutoCAD files and the PTC Windchill environment

- Expose AutoCAD attributes to PTC Windchill for searching purposes
- Make PTC Windchill attributes available within AutoCAD for purposes such as displaying values on drawing borders
- Allow AutoCAD attributes to be edited in the PTC Windchill environment
- Eliminate the need to enter attributes in both the PTC Windchill and AutoCAD environments
- Reduce the amount of time designers spend entering information in AutoCAD by having certain attributes, such as information on drawing borders, automatically populated by PTC Windchill

### Integrate the AutoCAD environment within PTC Windchill and its related enterprise processes

- Utilize PTC Windchill tools for managing AutoCAD data within the product structure, development process and lifecycle
- Enable Check-In and Check-Out of named design baselines, latest configurations, or criteria such as latest released configuration or effectivity date
- Manage AutoCAD data within the PTC Windchill engineering change management process
- Eliminate BOM redundancy and errors by synchronizing the enterprise BOM with the AutoCAD structure
- Allow AutoCAD data to be part of an enterprise BOM structure that can contain data from many different CAD systems
- Enable version control on AutoCAD data to record complete traceability of changes and design development
- Enable concurrent development, as PTC Windchill can track all related activities and convey that information to other members of the design team
- Utilize status icons to quickly inform AutoCAD designers and other users about the condition of AutoCAD data within PTC Windchill

### Embed PTC Windchill in the AutoCAD application

- Open AutoCAD files, stored in PTC Windchill, directly from AutoCAD
- Perform key PTC Windchill actions, such as Revise, Check-In and Check-Out, directly from the AutoCAD environment
- Inform AutoCAD users on any relevant PTC Windchill events via pop-up messaging system
- Upload AutoCAD files to the PTC Windchill database using background processes
- Use a comprehensive set of preferences to personalize and streamline your AutoCAD interaction with PTC Windchill
- Save AutoCAD drawings and their references directly to PTC Windchill

### Exchange and share design data in a fully collaborative environment

- Enable controlled sharing of AutoCAD data across the enterprise
- Utilize generic visualization collaboration tools to provide visibility of AutoCAD design to the entire enterprise, regardless of whether users have access to or knowledge of AutoCAD
- Make AutoCAD design data available to external audiences having proper system access

### Platform specifications

- Prerequisite: PTC Windchill PDMLink®, PTC Windchill ProjectLink™
- Operating Systems: Microsoft® Windows® (32-bit & 64-bit): XP, Vista, Windows 7
- Browser: Internet Explorer® & Mozilla Firefox®
- Languages: English, Chinese (Traditional), Chinese (Simplified), Spanish, Italian, French, German, Japanese, Korean, Russian

For the most up-to-date platform support information, visit: [PTC.com/partners/hardware/current/support.htm](http://PTC.com/partners/hardware/current/support.htm)

© 2012, PTC. All rights reserved. Information described herein is furnished for informational use only, is subject to change without notice, and should not be construed as a guarantee, commitment, condition or offer by PTC. PTC, the PTC Logo, PTC Windchill, PTC Windchill PDMLink, PTC Windchill ProjectLink, and all PTC product names and logos are trademarks or registered trademarks of PTC and/or its subsidiaries in the United States and in other countries. All other product or company names are property of their respective owners. The timing of any product release, including any features or functionality, is subject to change at PTC's discretion.

J1214– PTC Windchill Workgroup Manager for AutoCAD–DS–EN–1012